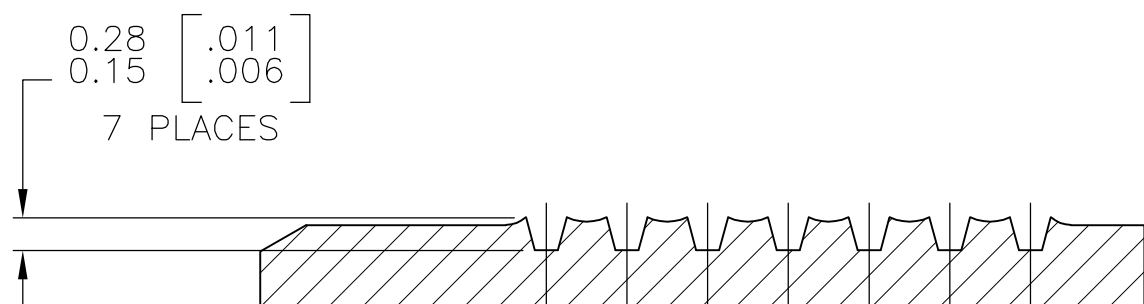
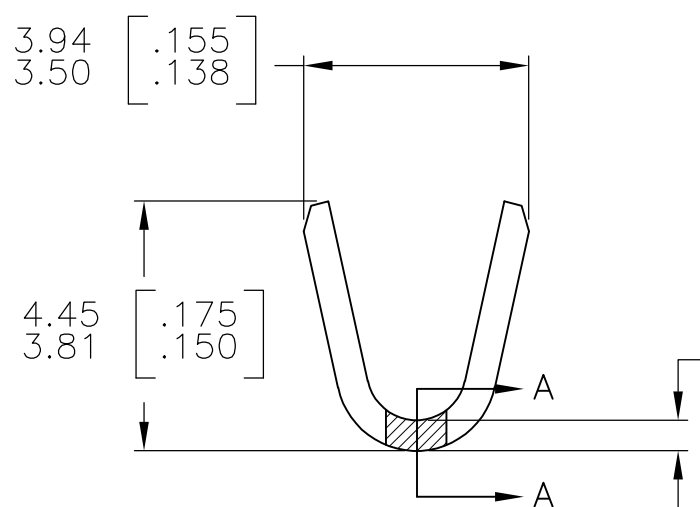
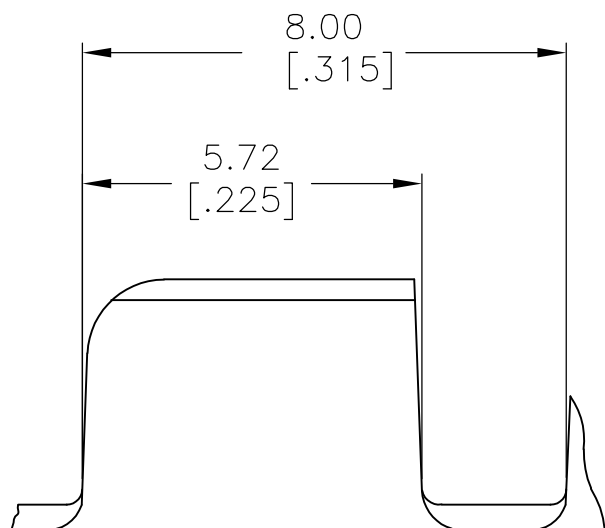
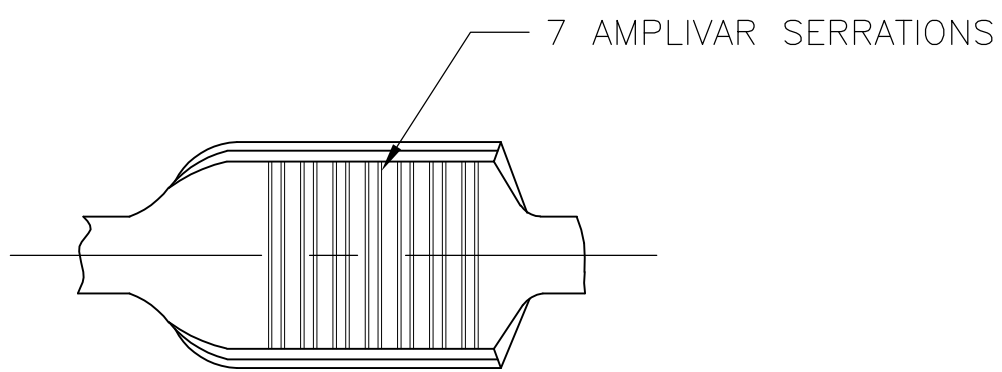


THIS DRAWING IS UNPUBLISHED. RELEASED FOR PUBLICATION
 © COPYRIGHT BY TYCO ELECTRONICS CORPORATION. ALL RIGHTS RESERVED.

| | | | | | | | |
|-----|------|-----------|-----|---------------------------|---------|-----|------|
| LOC | DIST | REVISIONS | | | | | |
| AF | 50 | P | LTR | DESCRIPTION | DATE | DWN | APVD |
| | | | K2 | REVISED PER ECR-07-018788 | 20AUG07 | HMR | GP |

- 1 CONTINUOUS STRIP ON REELS
- 2 DIMENSIONS IN BRACKETS ARE IN INCHES
- 3 FOR ADDITIONAL INFORMATION, SEE APPLICATION SPEC. 114-2002
- △4 FOREIGN PRODUCTION PART NUMBER
- 6 WIRE RANGE: 1500 - 5000 CMA
- △7 CRIMP WIDTH: .110 F TYPE (AMPLIVAR PIGTAIL)
 CRIMP HEIGHT (±.002)=(TOTAL CMA+10,700)/193,400
 GENERAL APPLICATION GUIDELINES MUST BE FOLLOWED AS SPECIFIED IN CATALOG #82221
 FOR APPLICATOR INFORMATION CALL:1-800-722-1111
 FOR PRODUCT INFORMATION CALL:1-800-522-6752



SECTION A-A
SCALE 20:1

| | | | | |
|----|----------|----------|-----------|---------|
| | | SPECIAL | TIN PLATE | 62040-6 |
| △4 | OBSOLETE | / | / | 62040-5 |
| △4 | OBSOLETE | / | / | 62040-4 |
| | OBSOLETE | REVERSE | TIN PLATE | 62040-3 |
| | | STANDARD | - | 62040-2 |
| | | STANDARD | TIN PLATE | 62040-1 |
| | | REELING | FINISH | PART NO |

| | | | | | | |
|--|-----------|------------------|-----------|------------|---|-----|
| THIS DRAWING IS A CONTROLLED DOCUMENT. | | DWN | 16OCT2006 | | Tyco Electronics Corporation Harrisburg, PA 17105-3608 | |
| DIMENSIONS: mm [INCHES] | | CHK | G.D.PORTA | | NAME | |
| TOLERANCES UNLESS OTHERWISE SPECIFIED: | | APVD | G.D.PORTA | | SPLICE, AMPLIVAR | |
| 0 PLC ± - | | PRODUCT SPEC | - | | - | |
| 1 PLC ± - | | APPLICATION SPEC | - | | - | |
| 2 PLC ± - | | WEIGHT | - | | - | |
| 3 PLC ± 0.38 [.015] | | SIZE | CAGE CODE | DRAWING NO | RESTRICTED TO | |
| 4 PLC ± - | | A3 00779 | | C-62040 | - | |
| ANGLES ± 1° 0' | | CUSTOMER DRAWING | | SCALE | SHEET | REV |
| MATERIAL | FINISH | 8:1 | | 1 OF 1 | K2 | |
| BRASS | SEE TABLE | | | | | |